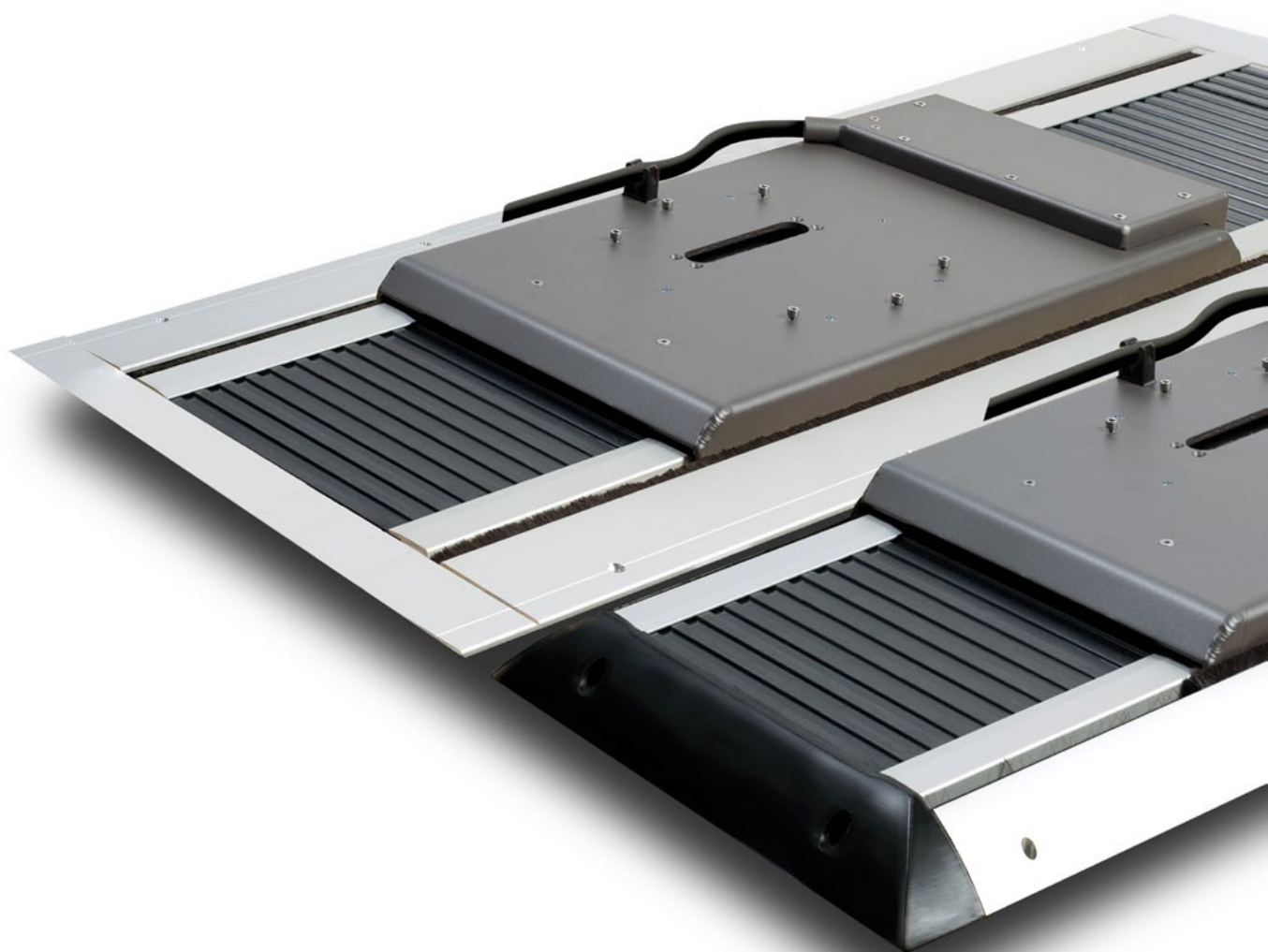


User manual

# Standard Deck rail



---

## Norsap models

6250	NARROW TOP mounted for 800 / 1000 / 1100
6251	NARROW FLUSH mounted for 800 / 1000 / 1100
6350	STANDARD TOP mounted for 1500
6351	STANDARD FLUSH mounted for 1500
6354	STANDARD TOP mounted for 1500 w / conveyer
6355	STANDARD FLUSH mounted for 1500 w / conveyer

Standard lengths - 1500, 2000, 3000 mm  
Contact Norsap for custom lengths

---

## STANDARD RAILS

High quality deck rails designed for all kind of environments. Stable and solid and may be released and locked from sitting position. Produced in high quality aluminium.

The STANDARD RAIL is a manual operated rail with a release handle, to intergrate or mount on your Norsap chair.

Depending on the chair model, the release handle can be intergrated in the armrest, swivel or a bolt on release handle on the chair. The release handle has two positions, locked or free, to position the chair and wagon in the most comfortable working position.

## SAFETY

Be sure to keep hands and fingers out of moving parts and areas when operating the product.

## CARE AND MAINTENANCE

We do not stand liable if alterations are made by cutting or disassembling the deck rails beyond that described here; Any such work will be done at your own risk. Do not apply grease in the wheel tracks. Grease will attract dust and other contaminants.

To ensure the deck rail operates at optimal function the track needs to be cleaned and free from dirt and foreign objects. This is best avoided by vacuuming the rails on a regular basis prefferably with a flat nozzle in the tracks of the wagon.

Occasional cleaning should be done with a reputable brand following the manufacturer's instructions.

## IMPORTANT WHEN MOUNTING

The deck rail 6354 and 6355 has three supportive profiles underneath the center pane of the splitted deck rail. Its important that these profiles has support, if the profiles does not rest on the base floor, additional support is needed to prevent the deck rail to be deformed when tread on.

## INTRODUCTION

Norsap is the recognized leader in the design and production of helmsman and operator seats for the maritime market.

This manual will help you make the most out of your Norsap product.

If you have any questions regarding your Norsap product, please contact our head office for further assistance.



Telephone  
+47 38 18 52 00

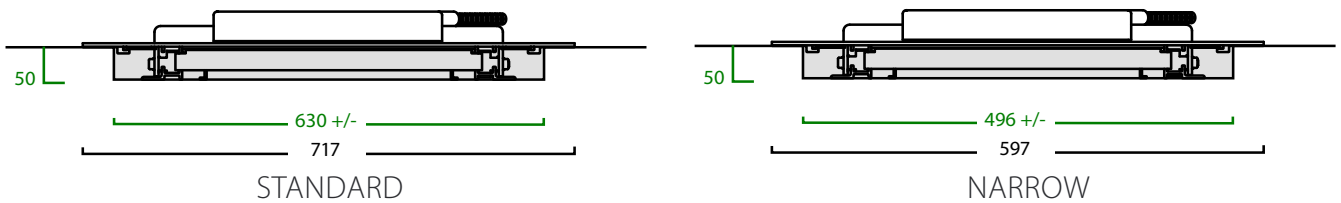
E-mail  
sale@norsap.com

Web  
NORSAP.COM

# INSTALLATION FLUSH RAILS

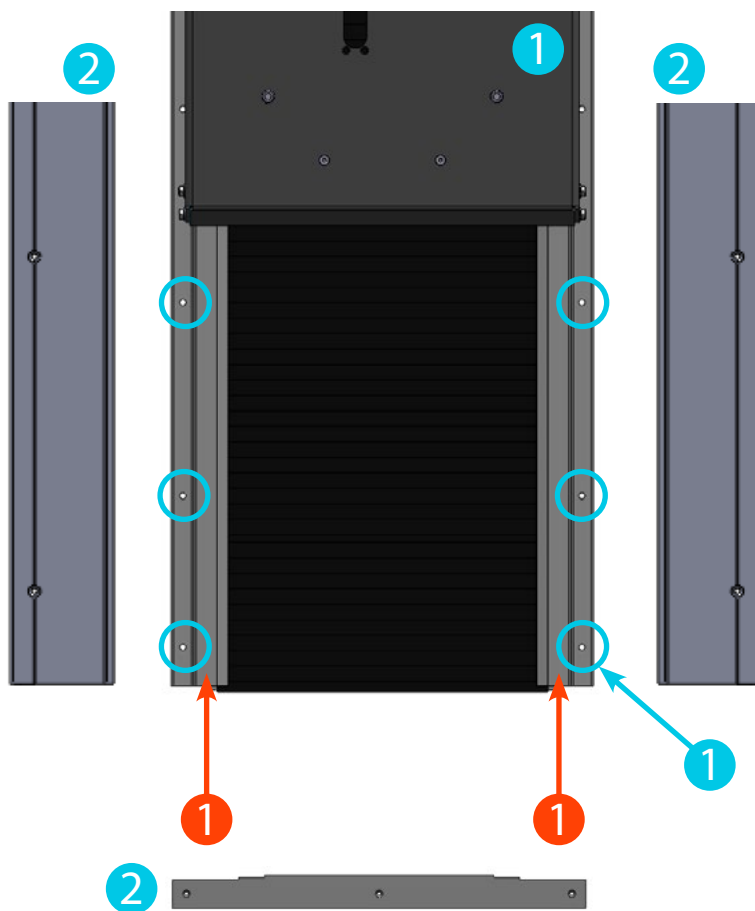
The deck rail assembly must be mounted on a flat and even surface. If it is not, the two rails may not be perfectly parallel with each other and the chair may not slide smoothly or it may become jammed and may not slide at all.

If the original deck surface is uneven, warped or otherwise distorted, something must be done to provide an even, flat surface on which to mount the deck rail assembly. We strongly recommend mounting a firm, flat and even surface onto the deck and mounting the deck rail assembly to this new surface. This “built up” surface should be the same length and width as the deck rail assembly so that it does not create a tripping hazard.



Add 9 mm clearance on both ends of the main profiles to get the recommended length of the recess

(1) Mount Deck Rail to floor first. (2) The Skirting Boards (outer casing) to be mounted after the gutters for the Carriage Wagon Wheels have been cleaned and free of particles that may accumulate here from ongoing work onboard.



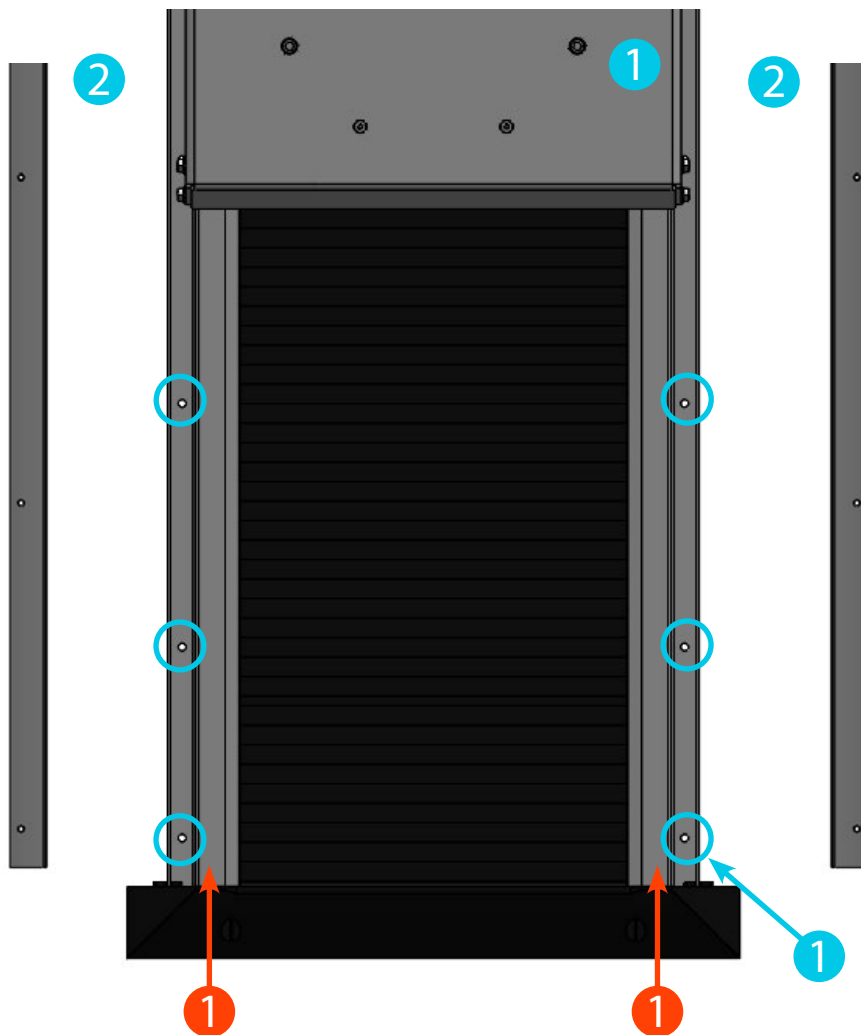
(1) It is important that the tracks are NOT lubricated.

# INSTALLATION TOP RAILS

The deck rail assembly must be mounted on a flat and even surface. If it is not, the two rails may not be perfectly parallel with each other and the chair may not slide smoothly or it may become jammed and may not slide at all.

If the original deck surface is uneven, warped or otherwise distorted, something must be done to provide an even, flat surface on which to mount the deck rail assembly. We strongly recommend mounting a firm, flat and even surface onto the deck and mounting the deck rail assembly to this new surface. This “built up” surface should be the same length and width as the deck rail assembly so that it does not create a tripping hazard.

(1) Mount Deck Rail to floor first. (2) The Skirting Boards (outer casing) to be mounted after the gutters for the Carriage Wagon Wheels have been cleaned and free of particles that may accumulate here from ongoing work onboard.



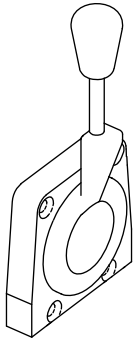
(1) It is important that the tracks are NOT lubricated.

# RELEASE UNIT FOR LOCKABLE WAGON

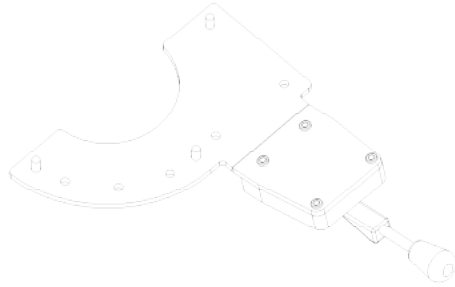
The deck rail has one type of release handle which can be directly mounted on the Norsap 800, 1000 and 1500 chair series. On Norsap 1100 chair series the release handle is mounted on bracket - **P13470** and onto the rotation module under the chair top. Norsap 1600s, 1800s and 4000s uses bracket - **A2826** to replace the cable covers on either side of the chair top, the release handle can be oriented in two different positions.

All Norsap 1100 chairs with long gliders or footrest which is not attached to the column, does not fit the standard mounting bracket. Consult with Norsap or your local dealer to get a suitable bracket.

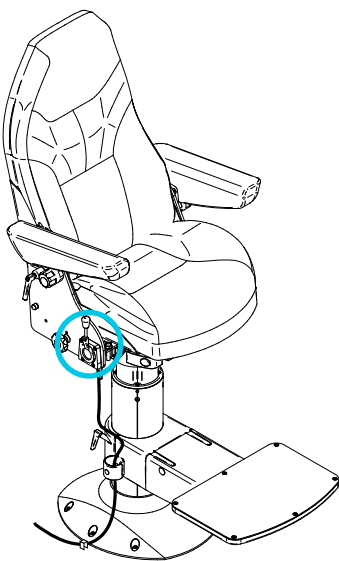
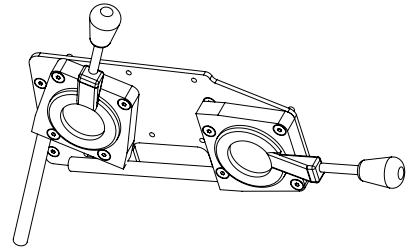
SPAK-001 - Release handle for Standard deck rail



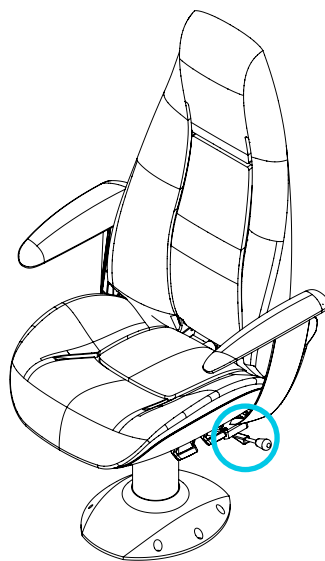
P13470 with release handle / SPAK-001



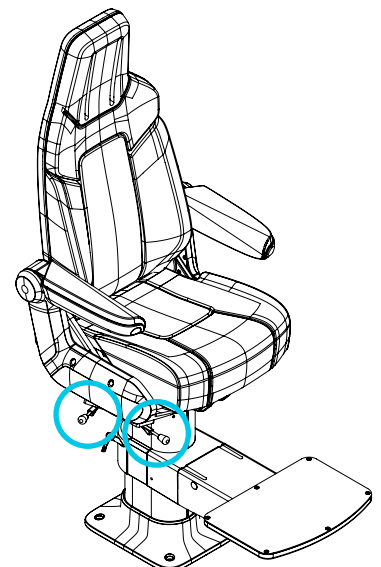
A2826 with release handle / SPAK-001  
Choose between two different positions.



6500 - Norsap 1500 is used as example for release handle placement on Norsap 800, 1000 and 1500



5025 - Norsap 1100 is used as example for release handle placement on Norsap 1100



8600- Norsap 1600 is used as example for release handle placement on Norsap 1600s and 1800s

