

Colour & UPHOLSTERY



Norsap 1600
Order example:
Art. No.: 6630, black outside
with perforated leather inser-
tion of black leather.
With silver stitching

UPHOLSTERY, EMBROIDERY AND COLOURS

Norsap offers custom look and feel of the upholstery and fabric of the chairs.

Norsap operates with standard upholstery and colours of leather, perforated leather, velour and fabric.

All materials are suited for the maritime working environment.

You may choose any of our standard colours and material combinations.

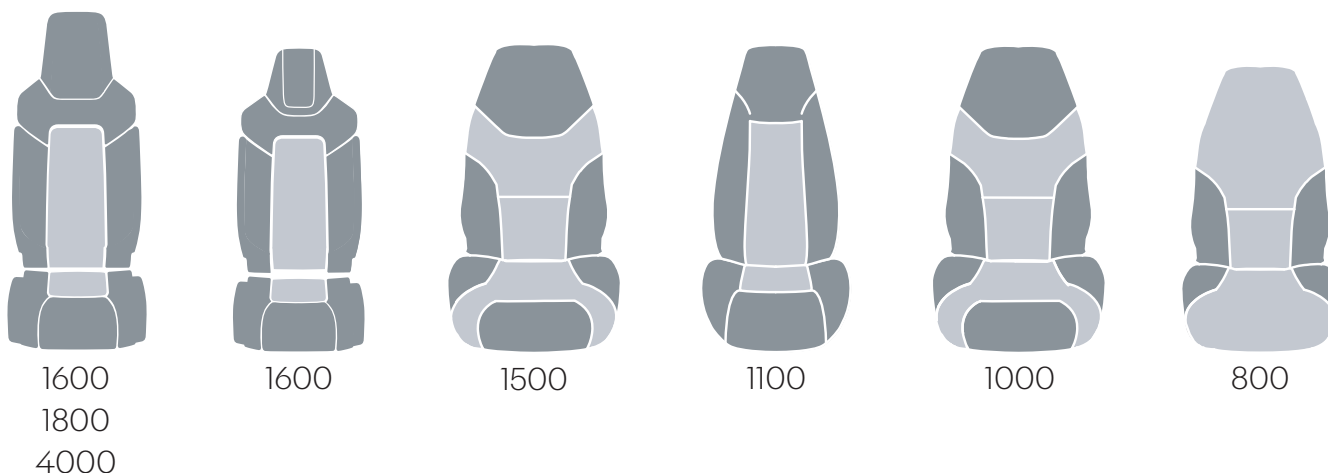
There are several fabric and leather/perforated leather combinations. You may also choose which colour the contrast seam is stitched in, giving you the ability to personalize the look of the chair.

Your chair can also be fitted with custom fabrics and custom coloured thread.

Please note:

Using other materials or colors than Norsap's standard selection may affect the delivery time.

If the customer do not specify colour or material, black leather with black threads is added as default.



ARMRESTS

The armrests will be produced with the same colour and fabric specified outside.

STITCHING AND THREAD

Single coloured pillows are fitted with double stitching.

Standard thread colour will be a similar colour as the inserted colour, if nothing else is stated.

CUSTOM LOGO

Norsap offers embroidery of your company, vessel or personal logo on the back or front of the backrest. When supplying logo for embroidery, please use a high resolution .BMP file.

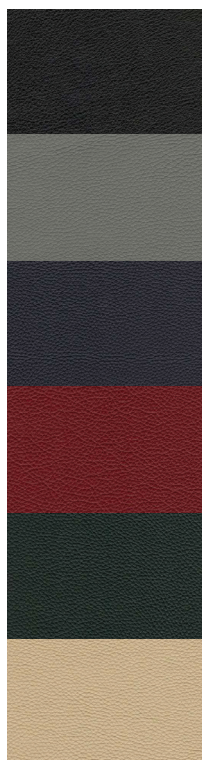
For logos on foil, we need the logo in a vector format for the best result

- Foil is only available for Norsap 1600, 1800 or 4000 chairs with aluminum backrest.

Download the Logo form from the QR code.



LEATHER AND PERFORATED LEATHER



A modern leather with high quality and a well-built texture. Chrome tanned and produced without the use of PCP and CFC which are damaging for the environment.

COMPOSITION

The leather is dyed through.

CARE AND MAINTENANCE

Regular cleaning with a moistened cloth and neutral soap. For more thorough treatment, soak a soft cloth in mild soap and wipe surface in a light circular motion.

ABRASION RESISTANCE

Generally for leather. Avoid strong rubbing. Not recommended for hard use.

FLAMMABILITY - Flame retardant

Certificate no MED-B-0201
IMO FTPC Part 8 / IMO res. A652 (16)
UNI EN ISO 1021 - 1/2
BS 5852 1990 Sec. 4 NI/O-1, California
T.B. 117"
NT FIRE 039 /NT FIRE 040

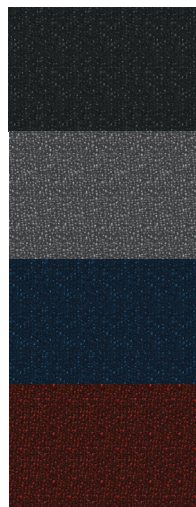
LIGHT FASTNESS

ISO 105 - B02:2013)

Perforated Leather

If perforated leather is enquired for the insertion, please use article number 6011.

FABRIC - CAMBORNE 24/7+



24/7 Flax continues our pioneering work with wool and natural bast fibers to create a high performance fabric with an enhanced environmental profile.

Ideal for heavy duty contract applications, the fabric is both highly durable and inherently flame retardant with no chemical additives.

The combination of flax yarn and crepe weave creates colored highlights and intriguing texture.

COMPOSITION

54% Nylon, 35% Wool, 11% Flax

CARE AND MAINTENANCE

Vacuum regularly. Wipe with a damp cloth using soap and water or use proprietary upholstery shampoo. For deeper cleaning use steam or professionally dry clean.

ABRASION RESISTANCE

Independently certified to
≥200,000 double rubs.

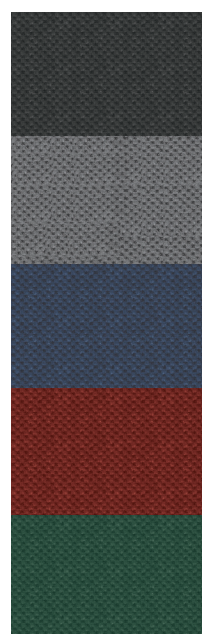
FLAMMABILITY

California Technical Bulletin 117 - 2013
NFPA 260 + UFAC Class 1
BS 7176 Medium Hazard
IMO FTP Code (Part 8)

LIGHT FASTNESS

AATCC-16 (40 hours) Class 4

VELOUR



CARE AND MAINTENANCE

Dry clean only or shampoo using proprietary upholstery shampoo.

ABRASION RESISTANCE

Recommended for hard use.

FLAMMABILITY

Flame retardant.

Norsap 1500
Order example:
Art. No.: 6510, black outside
with 24/7 insertion.
With silver stitching



